



Conference and Facility Hire



Keep in touch with us:




/GTGTraining

@GTG_Training



GTG Training

gtg.co.uk



At GTG, we're proud to offer a variety of meeting rooms, IT suites and conference facilities at our multi-million pound, leading-edge Training and Conference centre in Glasgow.

Just a short distance from Glasgow city centre and only 10 minutes from Glasgow Airport, GTG is the ideal location for guests from near or far. We also offer free on-site parking.

As well as offering an extensive range of high standard facilities, a member of our team will be on hand at all times to help you with any queries during your visit.

If you're planning an event or meeting, take a look for yourself and discover why GTG has everything you need.



GTG Glasgow was built in 2007 in the heart of the Clydeside regeneration zone, and this sleek, modern building is hard to miss.

Designed to host events of varying sizes, this contemporary venue is equipped with every technological and presentation requirement you will need.

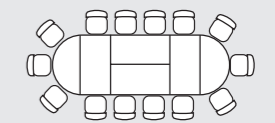
You can also choose from a variety of layouts for each of our meeting rooms, including break-out areas. For larger events, we can offer a spacious conference area.

Meeting rooms

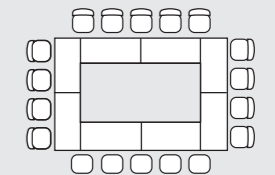
Our rooms are fully equipped for any type of training and can be configured to suit your individual needs.

All rooms include:

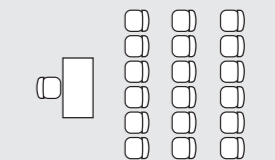
- Dry marker board
- Flipchart
- Projector and screen
- Wi-Fi
- Air conditioning
- Desk pads
- Pens
- Stationery box
- Water



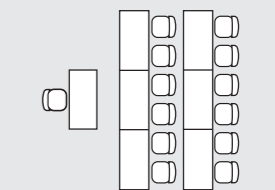
Boardroom



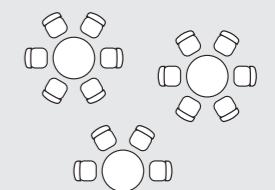
Hollow Square



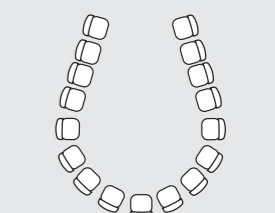
Theatre



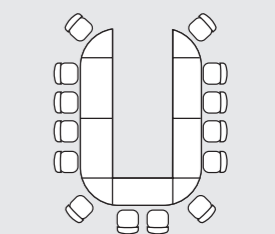
Classroom



Cabaret



Horseshoe



U-shaped



IT suites

Our IT suites are available to hire complete with all the equipment you need, and our expert IT support staff will help to ensure that everything is ready for your delegates, including pre-installing software prior to your arrival.

All IT suites include:

- Networked desktop PCs, including one for the trainer
- Printer
- Dry marker board
- Projector and screen
- Wi-Fi
- Air conditioning
- Microsoft Office on all computers



Food and refreshments

Thanks to our on-site café/restaurant, you can either tuck into something from our daily menu or choose a special menu from our selection of delegate packages, which can be tailored to cater to your individual requirements. Whether you'd like tea, coffee, cake and sandwiches or a full sit-down meal, we have something to satisfy everyone.

Conference facilities

We offer a generously proportioned 250-seat, theatre-style conference suite, ideal for large training events, product launches and awards ceremonies. This is a flexible space, which can also be broken down into separate areas depending on requirements, and can accommodate a variety of room layouts. The conference suite also features the latest audiovisual seminar technology, along with WiFi, projector screens and air conditioning.

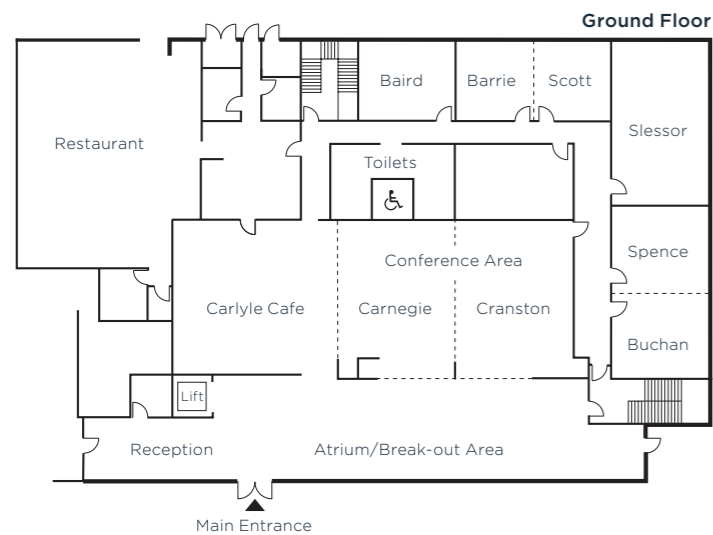
This is adjacent to the main foyer area, which creates an ideal breakout area to set up catering and refreshments for your delegates.

Floor plans and room information

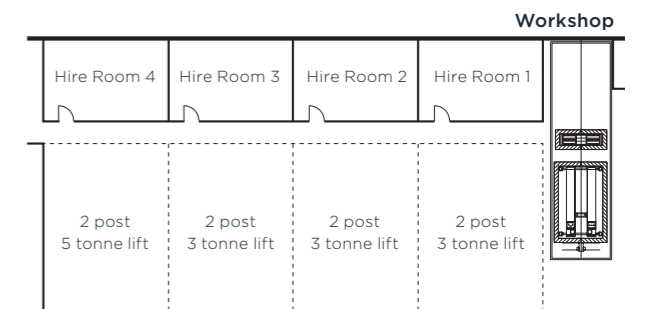
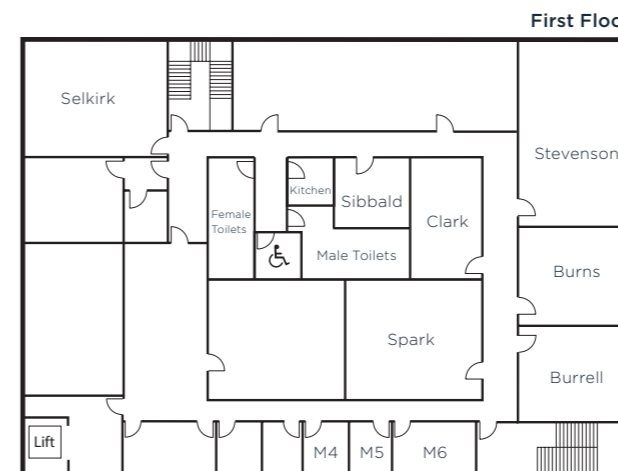
Split over two levels, we have a selection of versatile rooms available in various sizes and layouts.

Every room is named after a popular historical figure, from Burns to Mackintosh, and short biographies of their namesake are displayed near the door. These provide great conversation starters and are ideal for brushing up on Scottish history.

GTG Glasgow room information															
Room Name	Capacities									Dimensions (in metres)					
	Theatre	Classroom	Boardroom	U Shaped	Hollow Square	Horse shoe	Dinner/Dance	Lunch/Dinner	Cabaret	Length	Width	Area m ²	Height	Door Height	Door Width
Baird	40	18	12	12	20	18				6.7	5.25	35.2	2.9	2.2	0.93
Buchan	40	18	12	12	20	18				5.9	6.8	40.1	2.9	2.2	0.93
Burns		12								6.8	6	40.8	3.0	2.2	0.93
Burrell		12								6.8	5.9	40.1	3.0	2.2	0.93
Barrie	32	12	8	8	12	16				5.4	5.25	28.4	2.9	2.2	0.93
Scott	32	12	8	8	12	16				5.35	5.25	28.1	2.9	2.2	0.93
Slessor	65	40	24	28	32	36				11.4	6.8	77.5	2.9	2.2	0.93
Spence	40	18	12	12	20	18				5.9	6.8	40.1	2.9	2.2	0.93
Stevenson		18								6.8	5.9	40.1	3.0	2.2	0.93
Carnegie	90	40	20	24	28	30	30	45	36	9.9	7.9	71.1	2.9	N/A folding walls	
Cranston	90	48	20	24	28	30	30	45	36	11.1	8.5	76.5	2.9	N/A folding walls	
Carnegie & Cranston	200	108	40	46	56		70	96	96	16.4	8.5	190.4	2.9	N/A folding walls	
Buchan & Spence	80	36	24	24	36	36				11.8	6.8	80.2	2.9	N/A folding walls	
Barrie & Scott	62	24	20	18	24	32				11	5.25	57.7	2.9	N/A folding walls	
Maclean (M4)			4							3.05	2.55	7.8	2.9	2.2	0.93
Macleod (M5)			4							3.05	2.55	7.8	2.9	2.2	0.93
MacMillan (M6)			6							3.05	3.55	10.8	2.9	2.2	0.93
Hire Room 1	32	18	16	12	16	16				8.7	5.6	49.33	2.9	2.2	0.93
Hire Room 2	32	18	16	12	16	16				8.7	5.6	49.33	2.9	2.2	0.93
Hire Room 3	32	18	16	12	16	16				8.7	5.6	49.33	2.9	2.2	0.93
Hire Room 4	32	18	16	12	16	16				8.7	5.6	49.33	2.9	2.2	0.93
Clark			8							4.7	9.3	43.7	3	2.2	0.90
Spark	100	40	20	24	32	30			39	9.6	9.3	89.3	3	2.2	0.90
Sibbald	32	10	8	16	12	15			12	5.3	5.3	21.2	3	2.2	0.90
Selkirk	72	12	10	16	20	22			40	6.9	3.9	26.91	3	2.2	1.4



GTG Glasgow room equipment																			
Room Name	IT				Presentation					Lighting				Other					
	Computers	Type	Monitor	Printer	Networked	Internet/Wi-Fi	LCD Projector	Smart Board	Marker Board	Flip Chart	Type	In Room Controls	Blackout	Natural Daylight	3 Phase Power	Sound System	Partitioning	Phone Point	Air Conditioning
Baird					✓	✓	✓	✓	✓	✓	Fluorescent	✓		✓				✓	✓
Buchan					✓	✓	✓	✓	✓	✓	Fluorescent	✓		✓				✓	✓
Burns	13	Desktop	17" LCD	Mono Laser	✓	✓	✓	✓	✓	✓	Fluorescent	✓		✓				✓	✓
Burrell	13	Desktop	17" LCD	Mono Laser	✓	✓	✓	✓	✓	✓	Fluorescent	✓		✓				✓	✓
Barrie					✓	✓	✓	✓	✓	✓	Fluorescent	✓		✓				✓	✓
Scott					✓	✓	✓	✓	✓	✓	Fluorescent	✓		✓				✓	✓
Slessor					✓	✓	✓	✓	✓	✓	Fluorescent	✓		✓				✓	✓
Spence					✓	✓	✓	✓	✓	✓	Fluorescent	✓		✓				✓	✓
Stevenson					✓	✓	✓	✓	✓	✓	Fluorescent	✓		✓				✓	✓
Carnegie					✓	✓				✓	Downlights	✓	✓		✓	✓	✓	✓	✓
Cranston					✓	✓				✓	Downlights	✓	✓		✓	✓	✓	✓	✓
Carnegie & Cranston					✓	✓				✓	Downlights	✓	✓		✓	✓	✓	✓	✓
Buchan & Spence					✓	✓	✓	✓	✓	✓	Fluorescent	✓		✓			✓	✓	✓
Barrie & Scott					✓	✓	✓	✓	✓	✓	Fluorescent	✓		✓			✓	✓	✓
Maclean						✓				✓	Fluorescent	✓		✓				✓	✓
Macleod						✓				✓	Fluorescent	✓		✓				✓	✓
MacMillan						✓				✓	Fluorescent	✓		✓				✓	✓
Hire Room 1						✓	✓	✓	✓	✓	Fluorescent	✓		✓				✓	
Hire Room 2						✓	✓	✓	✓	✓	Fluorescent	✓		✓				✓	
Hire Room 3						✓	✓	✓	✓	✓	Fluorescent	✓		✓				✓	
Clark						✓					Fluorescent	✓	✓					✓	✓
Spark						✓	✓	✓	✓	✓	Fluorescent	✓	✓					✓	✓
Sibbald						✓		✓	✓	✓	Fluorescent	✓	✓					✓	✓
Selkirk					✓	✓	✓	✓	✓	✓	Fluorescent	✓		✓	✓			✓	✓



Glasgow and beyond

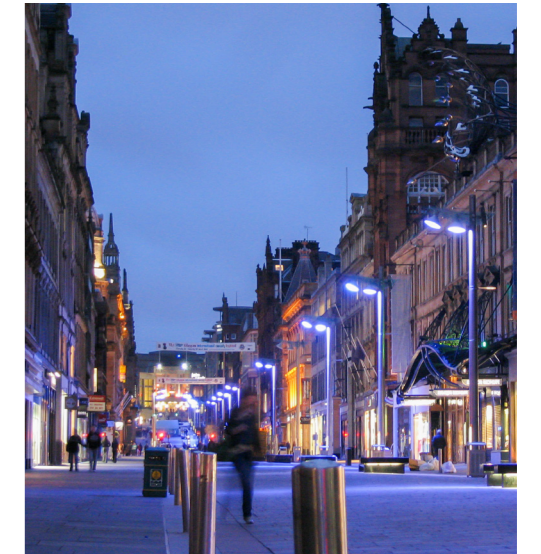
At GTG we understand that there's more to life than work. There is a wide variety of attractions and places to visit nearby, and we are more than happy to offer our recommendations.

If you're in need of retail therapy, Glasgow city centre is a top shopping destination, featuring everything from high-end designers to top high street brands and department stores. Glasgow also has stunning museums - including the Kelvingrove Art Gallery - and architecture that showcases the homegrown talents of Charles Rennie Mackintosh.

Glasgow also boasts a wide selection of bars and restaurants, making the city one of the most popular nightlife locations in the UK.

If you want to travel further afield, we are situated just 40 minutes' drive from Loch Lomond, where you can enjoy the beautiful surroundings, stunning views and local wildlife. Further to the east, Scotland's capital city, Edinburgh is only 1 hour away in the car, and is easy to get to by bus or train.

Of course, this is just an example of what Glasgow and Scotland have to offer - please speak to a member of our events team for more information.



Glasgow 1330 South Street G14 0BJ

0141 950 5600